



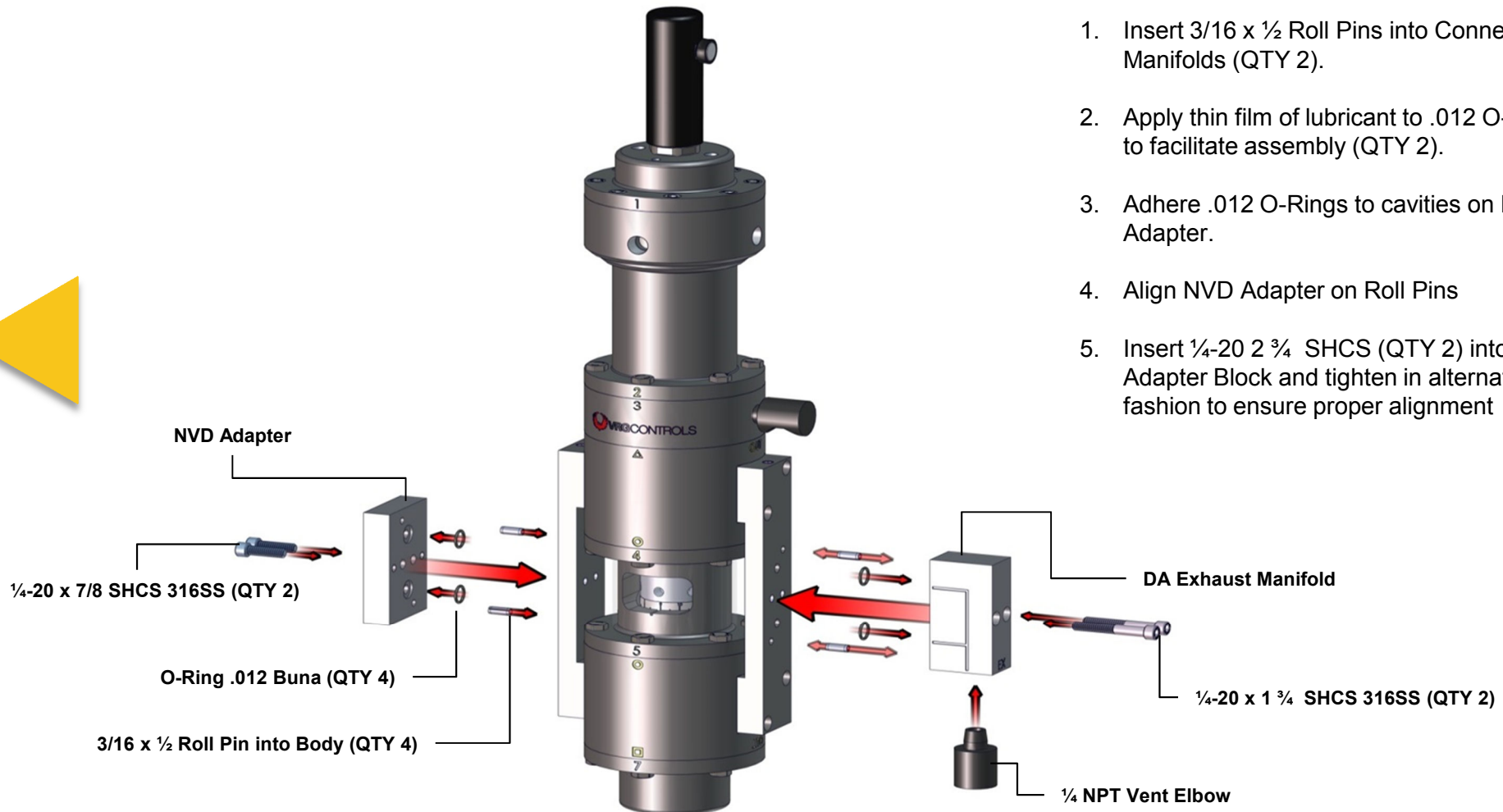
# **NVD No Vent Device Installation Instructions**

# Install NVD Adapter Plates



## Instructions:

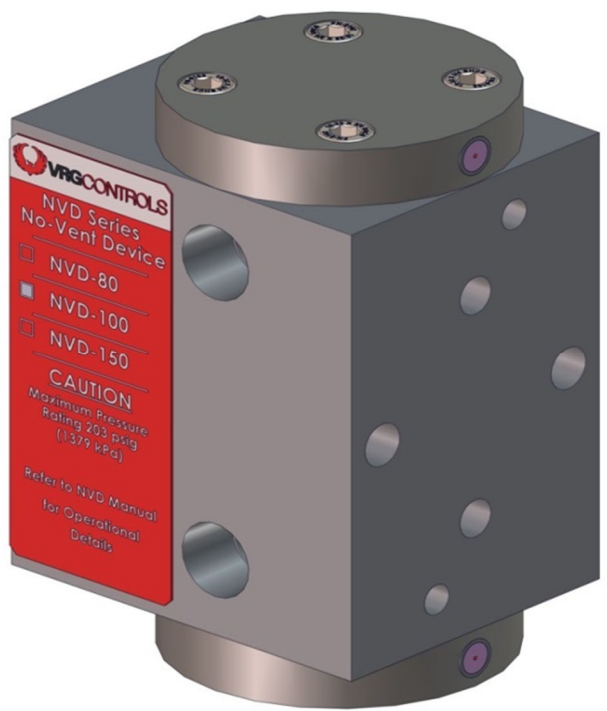
1. Insert 3/16 x 1/2 Roll Pins into Connector Manifolds (QTY 2).
2. Apply thin film of lubricant to .012 O-Rings to facilitate assembly (QTY 2).
3. Adhere .012 O-Rings to cavities on NVD Adapter.
4. Align NVD Adapter on Roll Pins
5. Insert 1/4-20 2 3/4 SHCS (QTY 2) into NVD Adapter Block and tighten in alternating fashion to ensure proper alignment



# NVD No-Vent Device



NVD No Vent Device



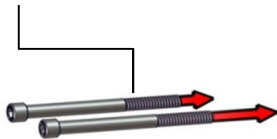
# Install NVD No-Vent Device



## Instructions:

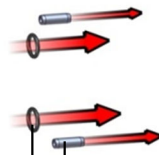
1. Insert 3/16 x 1/2 Roll Pins into NVD Adapter
2. Apply thin film of lubricant to .012 O-Rings to facilitate assembly.
3. Adhere .012 O-Rings to cavities on NVD Adapter Block (QTY 2).
4. Align NVD onto Roll Pins
5. Insert 1/4-20 2 3/4 SHCS (QTY 2) into NVD and tighten in alternating fashion to ensure proper alignment

1/4-20 x 2 3/4 SHCS 316SS



O-Ring -.012 Buna (QTY 4)

3/16 x 1/2 Roll Pin into Body (QTY 4)



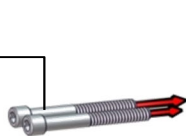
## VPC-700-DA-SN with NVD Installed



# Install Adjustable Orifice Block

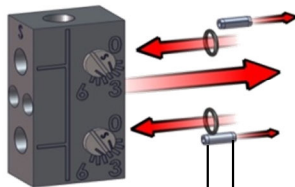


1/4-20 x 1 3/4 SHCS 316SS



O-Ring .014 Buna (QTY 4)

3/16 x 1/2 Roll Pin into Body (QTY 4)



## Instructions:

1. Insert 3/16 x 1/2 Roll Pins into NVD
2. Apply thin film of lubricant to .014 O-Rings to facilitate assembly.
3. Adhere .014 O-Rings to cavities on NVD No-Vent Device (QTY 2).
4. Align Orifice Block on Roll Pins
5. Insert 1/4-20 1 3/4 SHCS (QTY 2) into Orifice Block and tighten in alternating fashion to ensure proper alignment

# VPC-700-DA-SN with NVD No-Vent Device & Adjustable Orifices Installed

