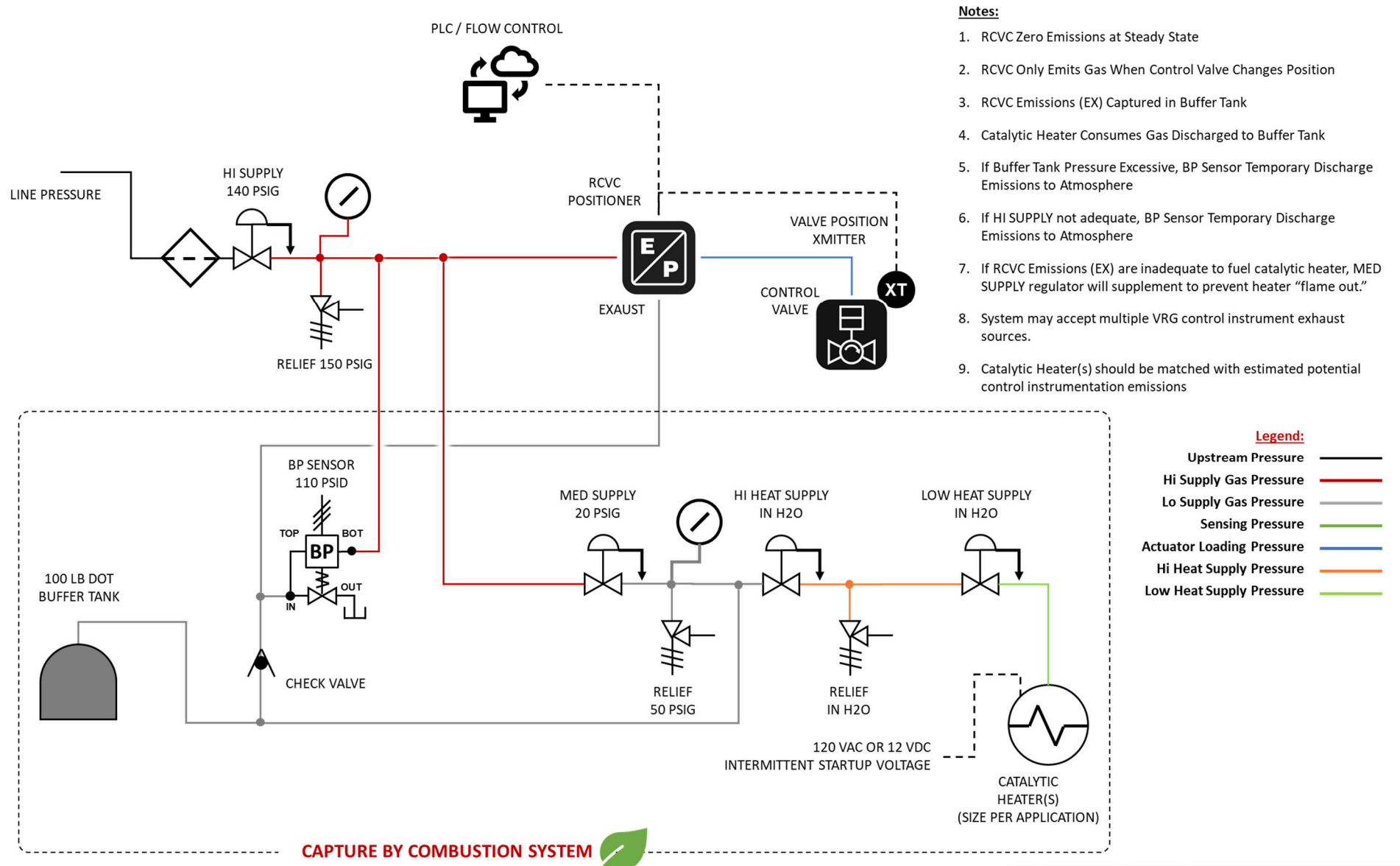


Carbon Capture by Combustion Solution



- Notes:**
1. RCVC Zero Emissions at Steady State
 2. RCVC Only Emits Gas When Control Valve Changes Position
 3. RCVC Emissions (EX) Captured in Buffer Tank
 4. Catalytic Heater Consumes Gas Discharged to Buffer Tank
 5. If Buffer Tank Pressure Excessive, BP Sensor Temporary Discharge Emissions to Atmosphere
 6. If HI SUPPLY not adequate, BP Sensor Temporary Discharge Emissions to Atmosphere
 7. If RCVC Emissions (EX) are inadequate to fuel catalytic heater, MED SUPPLY regulator will supplement to prevent heater "flame out."
 8. System may accept multiple VRG control instrument exhaust sources.
 9. Catalytic Heater(s) should be matched with estimated potential control instrumentation emissions

- Legend:**
- Upstream Pressure ———
 - Hi Supply Gas Pressure ———
 - Lo Supply Gas Pressure ———
 - Sensing Pressure ———
 - Actuator Loading Pressure ———
 - Hi Heat Supply Pressure ———
 - Low Heat Supply Pressure ———

CAPTURE BY COMBUSTION SYSTEM



Date	05/15/22	Title	CARBON CAPTURE BY COMBUSTION
Rev.	1	Customer	VRG Controls LLC